



# INFOPACK

15-19 October 2020, MOTYCZ LEŚNY near LUBLIN, POLAND

Co-funded by the  
Erasmus+ Programme  
of the European Union





## PROJECT OBJECTIVES:

- Raising young people's awareness of plastics in clothing throughout the entire product life cycle
  - To develop alternatives for an environmentally conscious and yet affordable way of dealing with fashion
- To train peer guides and youth workers in order to achieve the widest possible dissemination of the project results beyond the duration of the project.

What to  
Expect



Co-funded by the  
Erasmus+ Programme  
of the European Union

# WHEN AND WHERE?

15-19 OCTOBER 2020

MOTYCZ LEŚNY NEAR LUBLIN, POLAND



**Motycz Leśny,  
near Lublin**



Co-funded by the  
Erasmus+ Programme  
of the European Union



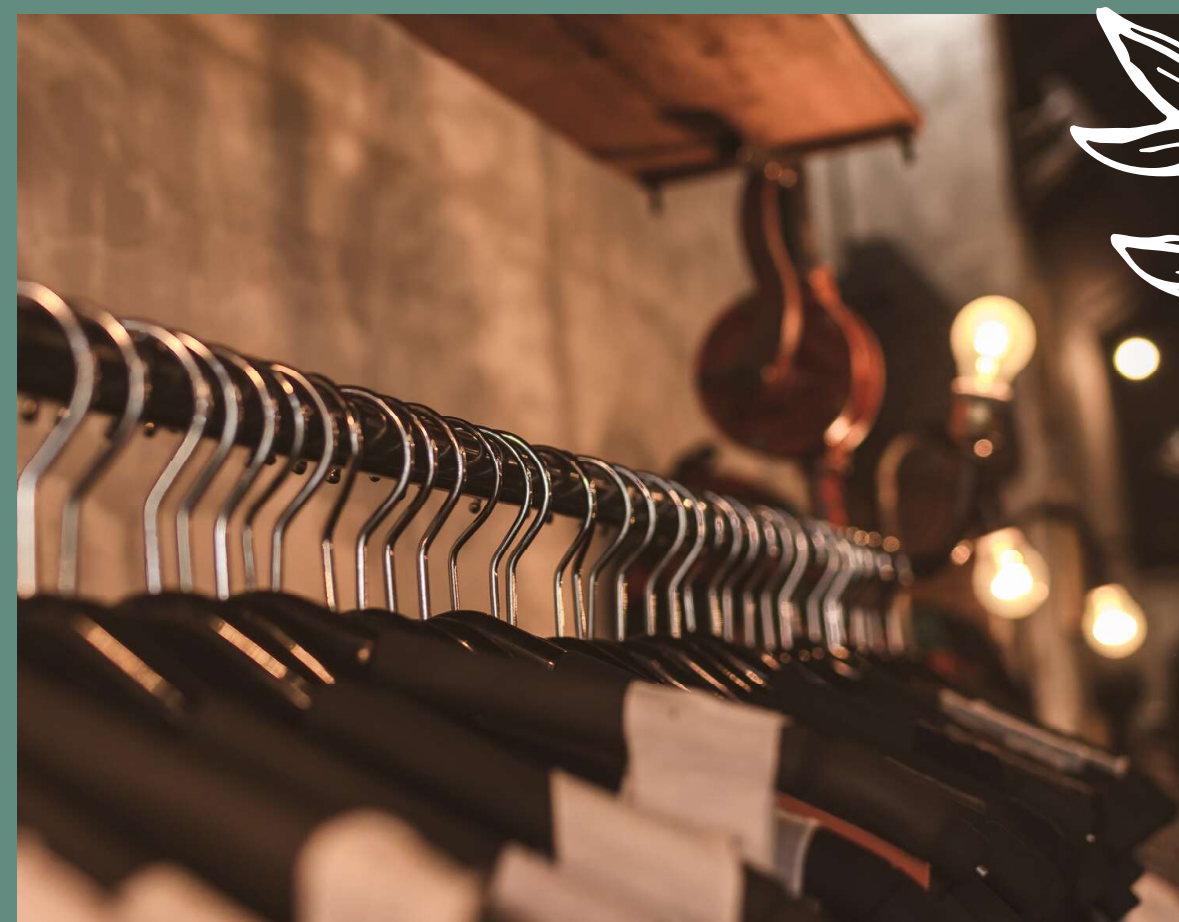
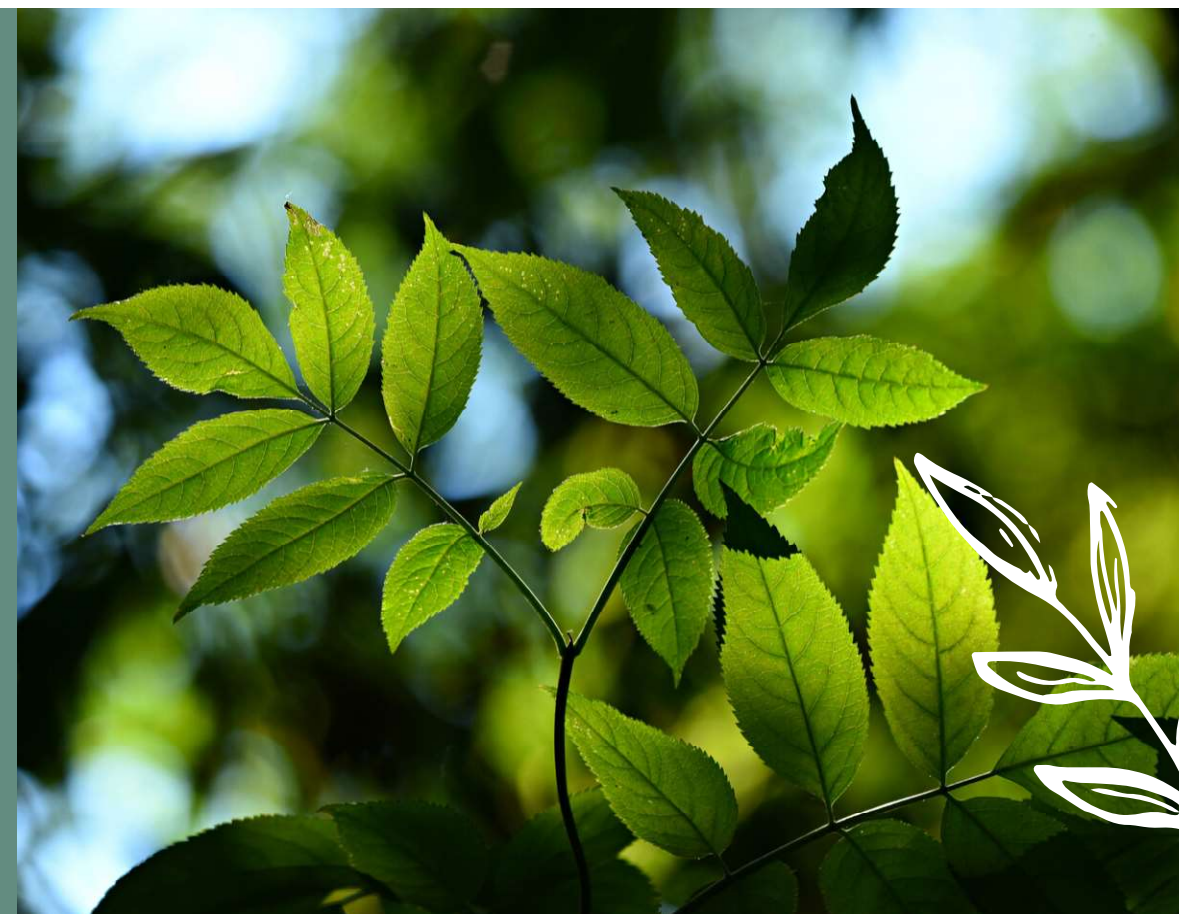
# HOSTING ORGANISATION

"Green  
Elephant"  
Foundation



# LEADING ORGANISATION

**bit** schulungcenter  
member of **bit** group



Co-funded by the  
Erasmus+ Programme  
of the European Union



# **"How to be best dressed sustainably – Yes, WE AR(E) ABLE!"**

The MAIN OBJECTIVE of this event is to conduct training sessions with young people in order to raise their awareness about the problem of plastics in clothing and the waste problem caused by the massive overconsumption of fashion in the nowadays typical "fast fashion world".



**BRING NATURE INTO  
YOUR WARDROBE**

Co-funded by the  
Erasmus+ Programme  
of the European Union

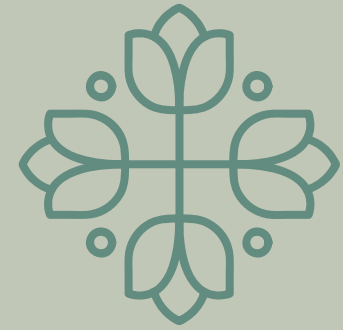


# PARTICIPANT'S PROFILE

## WHO ARE WE LOOKING FOR?

- 6 young people (from 15 to 19 y.o.) from each partner country (Austria, Poland, Italy, Lithuania)
- people with communicative, at least intermediate English
- people who are motivated to actively take part in the course

**PLEASE KEEP THE BALANCE BETWEEN MALE AND FEMALE PARTICIPANTS**



## GOOD NEWS

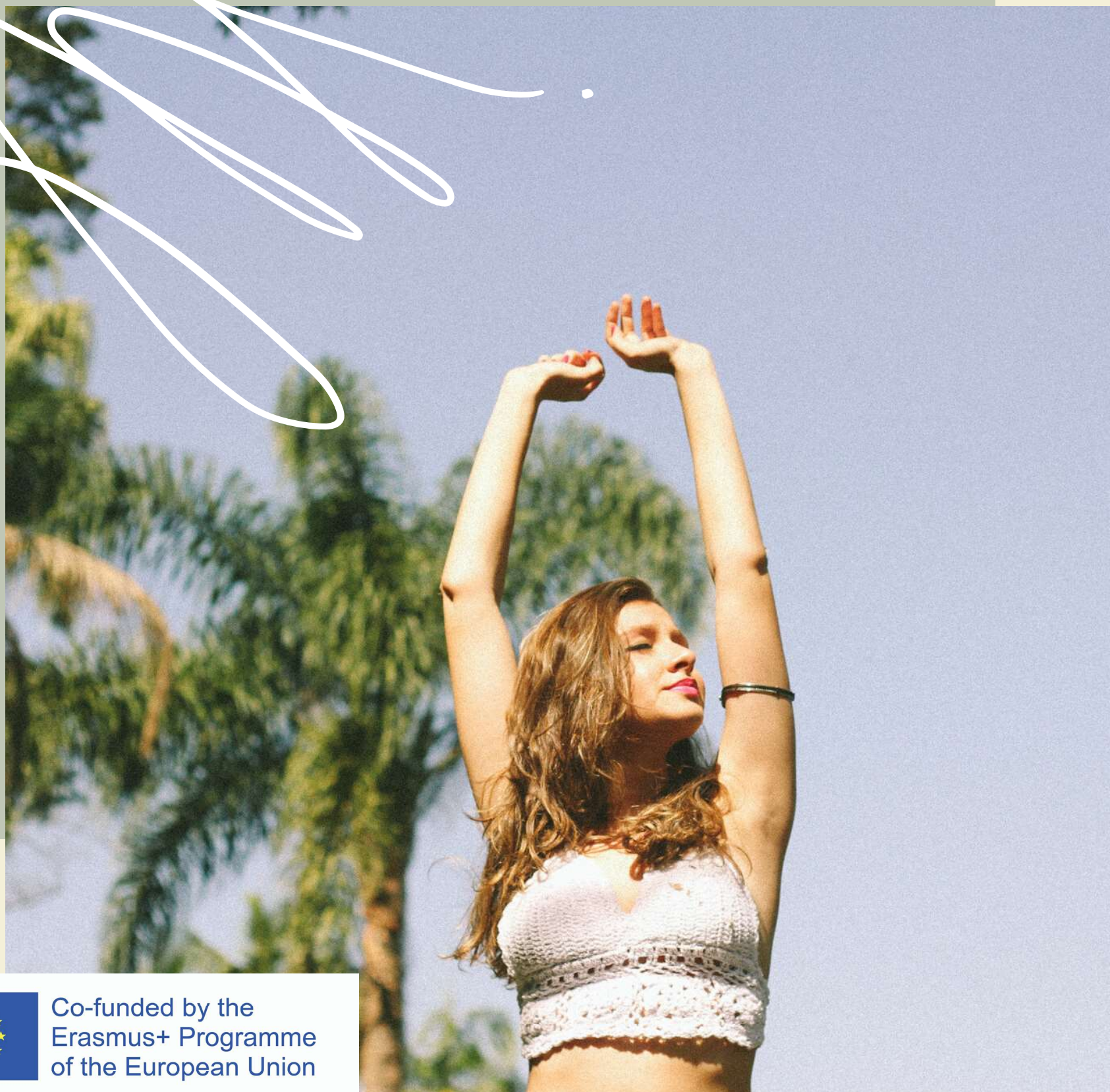
100% OF ACCOMMODATION, FOOD AND TRANSPORTATION DURING  
THE TRAINING COURSE  
ARE COVERED BY THE ERASMUS+ PROGRAM.





# How can I get to Motycz?

- Before you buy tickets, all travel options **MUST** be consulted with your sending organisation in order to inform us about your plans.  
Let us take care!
- Green Elephant Foundation is able to hire a bus if most of participants would need it. Participants can also come by cars directly to Motycz. We can hire a bus from Warsaw or Lublin. Motycz itself is located just 10 km from Lublin. If only small group would need help in a transport we will find you the best public bus and train connections in order to get to Motycz.
- Important! Don't book your flights back for an early morning. Motycz is not „right behind the corner” of Warsaw – it takes approximately 2.5 hours to get there. That's why it is problematic while your flight takes off at 6 or 7 a.m.

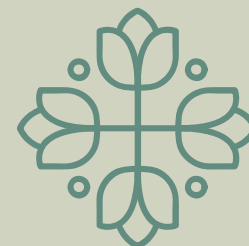
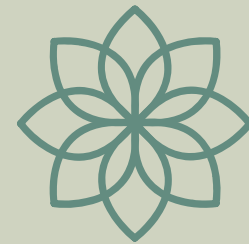


Co-funded by the  
Erasmus+ Programme  
of the European Union



# WHY MOTYCZ?

...WHY NOT?!



Motycz Leśny is a small, beautiful village situated few kilometers from city of Lublin. Its' amazing, peaceful, rural character creates magical atmosphere. Surrounded by forests and nature it is the perfect place to rediscover your inner self. Temperature in October varies from 5 to 18 degrees of Celsius so we recommend you to take some warm clothes.



# WHAT ABOUT LUBLIN?

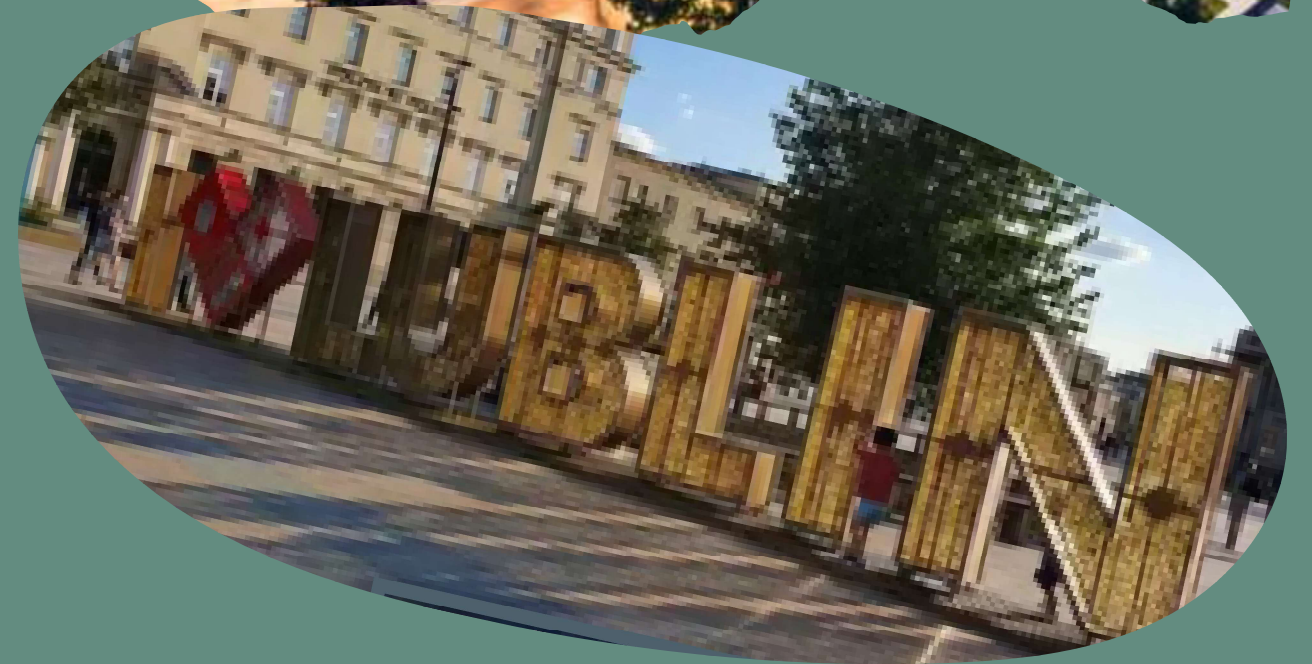
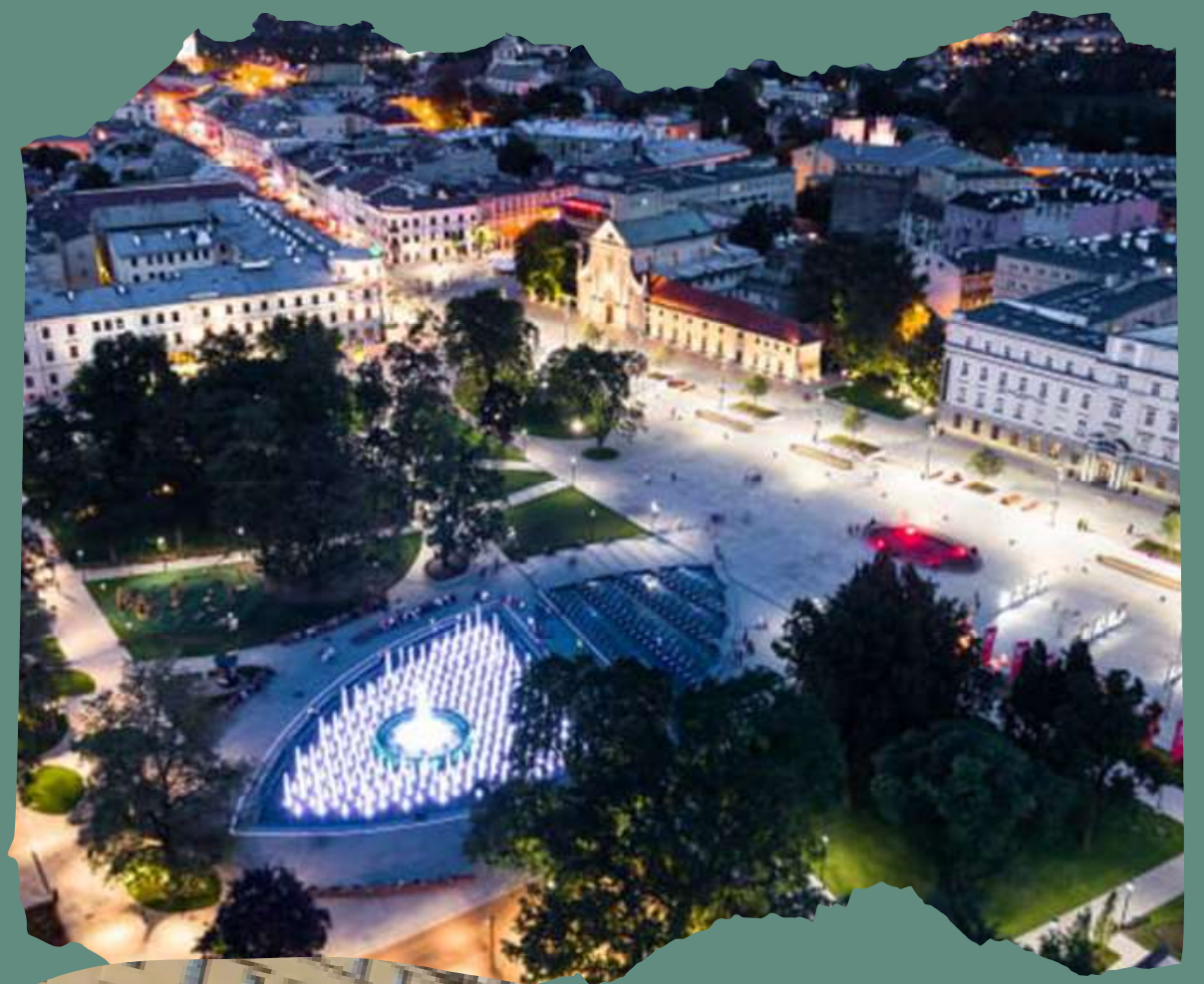
While the 20th century left Lublin somewhat dilapidated, it is now undergoing a process of constant, though discreet renovation. Its unique atmosphere lures a many tourists, and few are disappointed with the numerous cafes and clubs. It is a students' city throughout most of the year, and the many local universities and academies dominate the city. Its picturesque Old Town, located on a low, rounded hill, boasts many outstanding sights, and looks like a ready-made medieval film set. You cannot miss the Dominican Church and the monumental neo-Gothic castle with its chapel decorated with 15th-century frescoes.

Lublin remains predominantly an academic centre, even though several industrial sectors are quite well developed, especially in the production of light vans, the pharmaceutical industry and food processing.

Lublin has been organising international trade fairs since 1999.

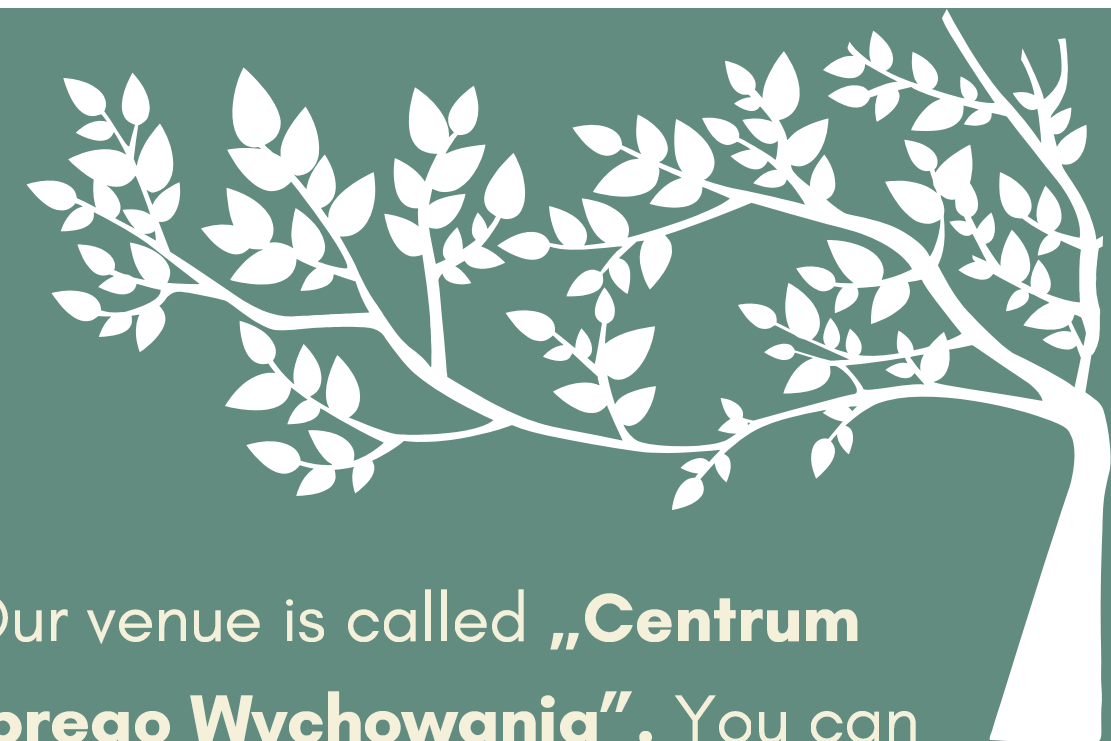
Lublin is undoubtedly worth a visit, even if it attracts fewer tourists than Krakow or Warsaw. Over the centuries it saw Polish and Jewish cultures harmoniously coexisting while the city's fibre developed.

The remnants of Lublin's past deserve exploration.





# WHERE WILL YOU STAY



Our venue is called „**Centrum Dobrego Wychowania**”. You can successfully google it. Unfortunately, only Polish language version is available.

## The most important things:

- o Rooms are for 2,3 and 4 persons. If you're fine with that we'll divide you to avoid problems. Of course if you have any wishes, feel free to contact us. We're open!
  - o In each room there's a bathroom and Wi-Fi.
  - o Towels are here! But you need to take your own hairdryer & shower gel.
- o Please inform us in the e-form about your food preferences. It is very important to us to make yourself at home.

Co-funded by the  
Erasmus+ Programme  
of the European Union







SO...

**...are you ready to  
become green?**

LET'S SHOW THE WORLD THAT  
WE ARE FASHIONABLE,  
SUSTAINABLE,

THAT

W E - A R (E) - A B L E\* !

\*able to change the world!



Co-funded by the  
Erasmus+ Programme  
of the European Union





Anything you wanna  
know?  
Contact us!

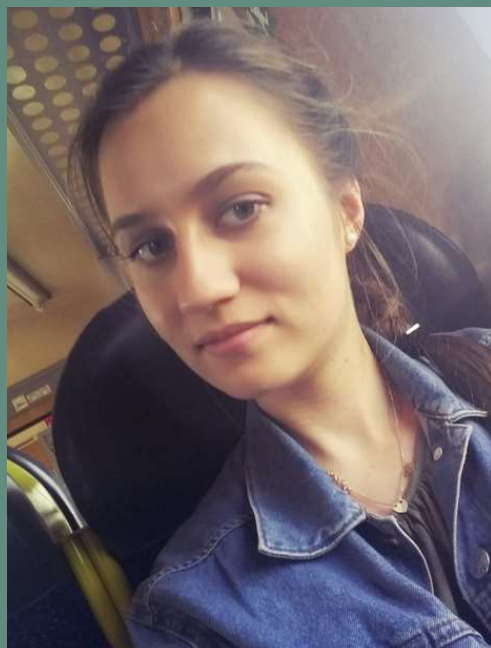


ADAM RĘBACZ

President

tel. +48792573548

email: [zielonyslon@greenelephant-foundation.com](mailto:zielonyslon@greenelephant-foundation.com)



MONIKA STĘPIEŃ

Project manager

tel. +48508789020

email: [monika.stepien@greenelephant-foundation.com](mailto:monika.stepien@greenelephant-foundation.com)



KAROLINA KARPIUK

Project manager

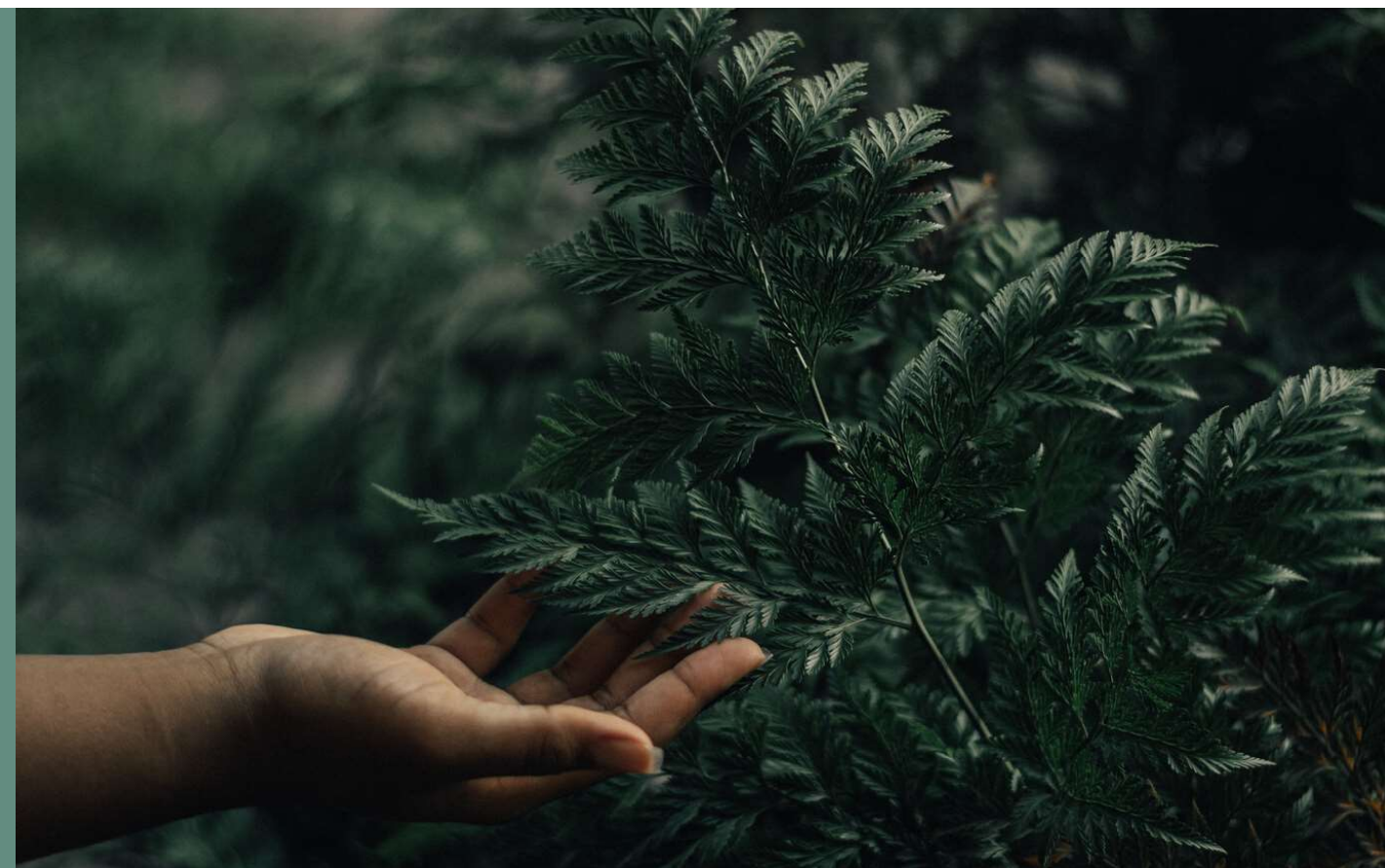
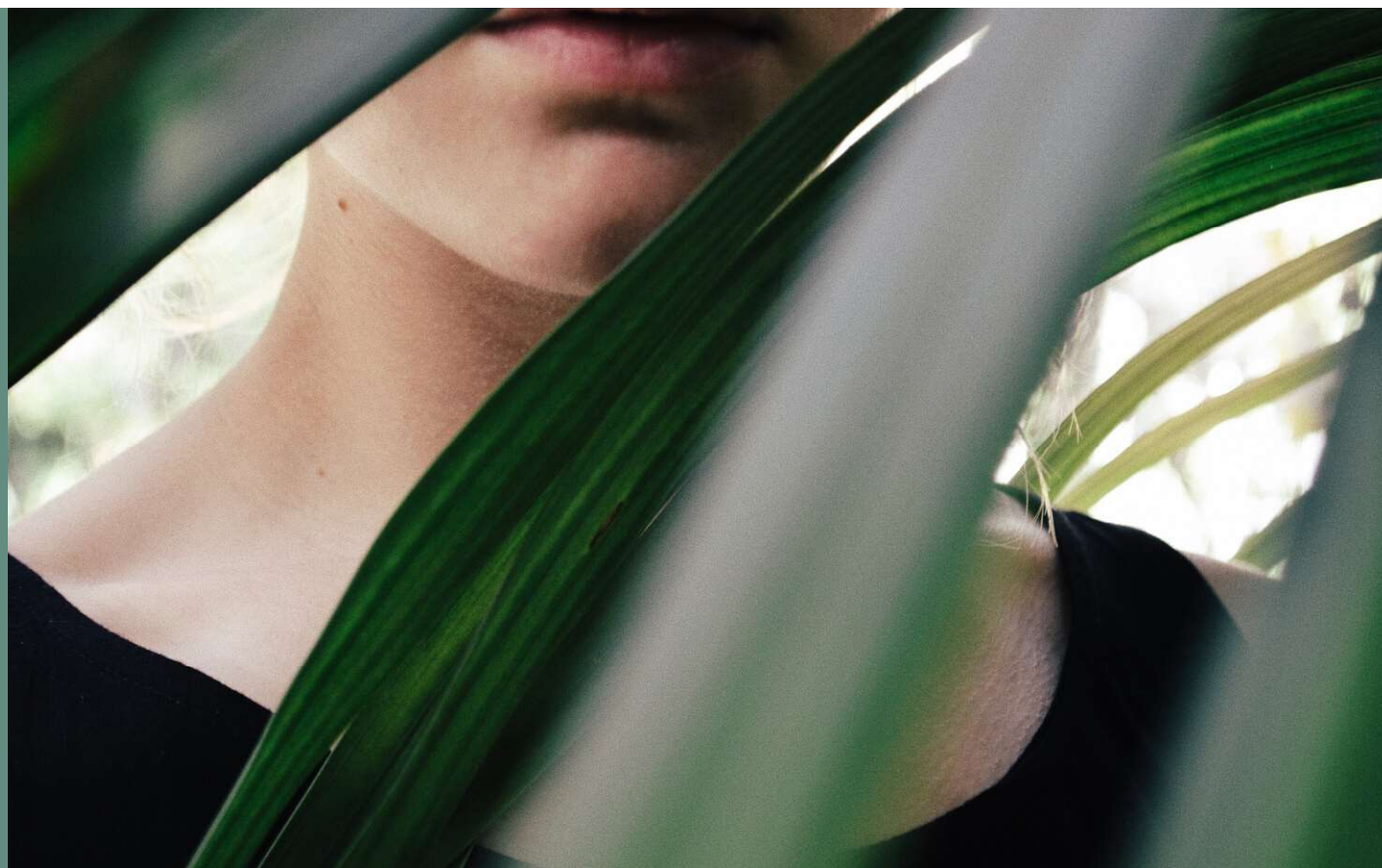
tel. +48882161866

email: [karolina.karpiuk@greenelephant-foundation.com](mailto:karolina.karpiuk@greenelephant-foundation.com)



Co-funded by the  
Erasmus+ Programme  
of the European Union





This project has been funded with support from the European Commission.

This publication reflects the views only of the author, and the Commission cannot be held responsible for any use which may be made of the information contained therein.